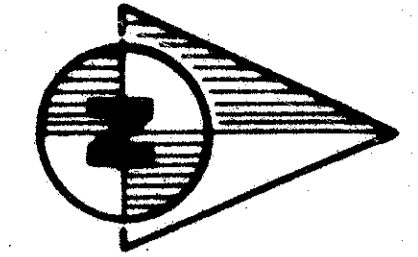


DEER RUN

Lying in Sections 21, 22, 23 & 26, Township 43 South, Range 40
East, Palm Beach County, Florida
September, 1977

SHEET 5 OF 6



38

STATE OF FLORIDA
COUNTY OF PALM BEACH

THIS PLAT WAS FILED FOR
RECORD AT _____ M.
THIS _____ DAY OF _____
AD., 1977 AND DULY RE-
CORDED IN PLAT BOOK
ON PAGES _____ AND _____

JOHN B. DUNKLE, CLERK
CIRCUIT COURT
BY: _____ DC

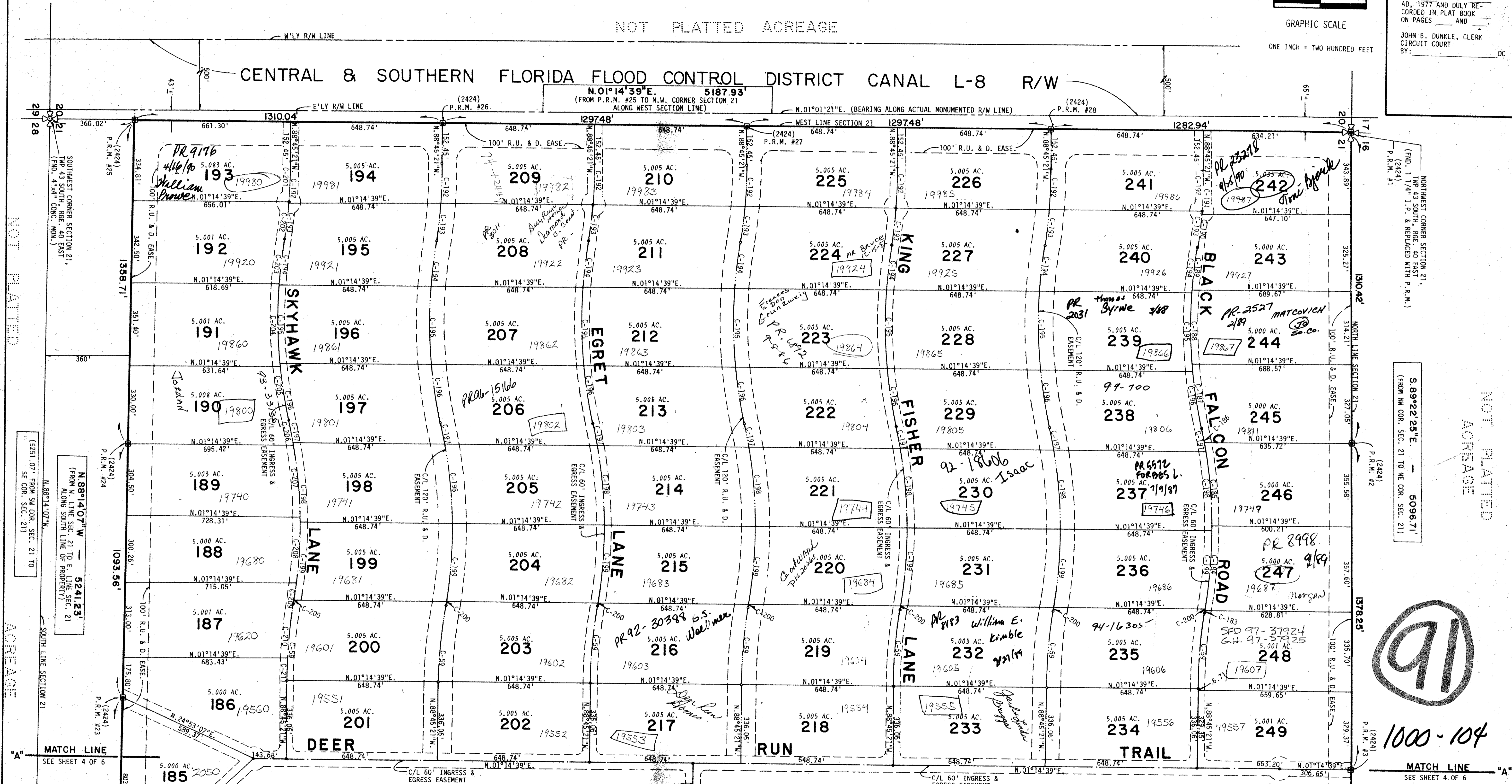


GRAPHIC SCALE

ONE INCH = TWO HUNDRED FEET

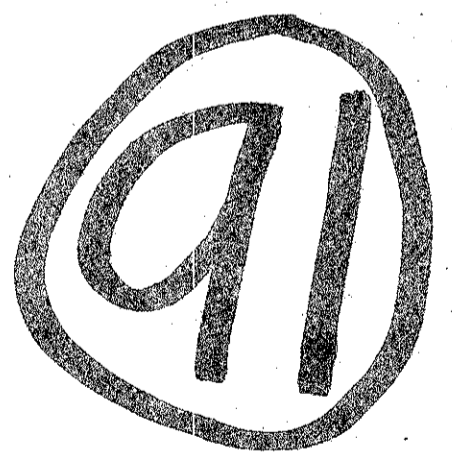
NOT PLATTED ACREAGE

CENTRAL & SOUTHERN FLORIDA FLOOD CONTROL DISTRICT CANAL L-8 R/W



NOT PLATTED ACREAGE

NOT PLATTED ACREAGE



1000-104

21, 22, 23, 26/43/40

35/38

DEER RUN

- NOTES:
1. P.R.M.'s (FLA. CERTIFICATE NO. 2424) ARE DENOTED THUS:
 2. ALL CULDESAC EASEMENTS ARE A DIAMETER OF 100 FEET.
 3. ALL RETURN RADII ALONG EASEMENT LINES FOR INGRESS AND EGRESS EASEMENTS ARE 25 FEET UNLESS OTHERWISE INDICATED.
 4. ALL RETURN RADII WHEN INDICATED ALONG EASEMENT LINES FOR RECREATION, UTILITY AND DRAINAGE EASEMENTS, (R.U. & D. EASE.), ARE 50 FEET UNLESS OTHERWISE SHOWN.
 5. R.U. & D. EASE. DENOTES RECREATION, UTILITY AND DRAINAGE EASEMENT.
 6. C-500 INDICATES A CURVE NUMBER FOR DATA PERTAINING TO SAME, CONSULT CURVE DATA TABLE ON SHEET 6 OF 6.
 7. CENTERED ALONG ALL LOT LINES, OR PORTIONS THEREOF, WHERE NO EASEMENT IS GRAPHICALLY SHOWN IS A 40 FOOT RECREATION, UTILITY AND DRAINAGE EASEMENT (R.U. & D. EASE.). ----- SEE DEDICATION ON SHEET 1 OF 6.

BENCH MARK
land surveying and mapping, inc.

CONRAD W. SCHAEFER CONSULTING ENGINEERS, INC.
PALM BEACH COUNTY FLORIDA

DEER RUN

DESIGNED	CWS	DRAWN	WSK	CHECKED	RJW	DATE	77-111
DATE	9/13/77	SCALE	1" = 200'	APPROVED	CWS	SHEET	5 OF 6

THIS INSTRUMENT WAS PREPARED IN THE OFFICES OF BENCH MARK LAND SURVEYING AND MAPPING, INC., 2300 PALM BEACH LAKES BLVD., SUITE 109, WEST PALM BEACH, FL.